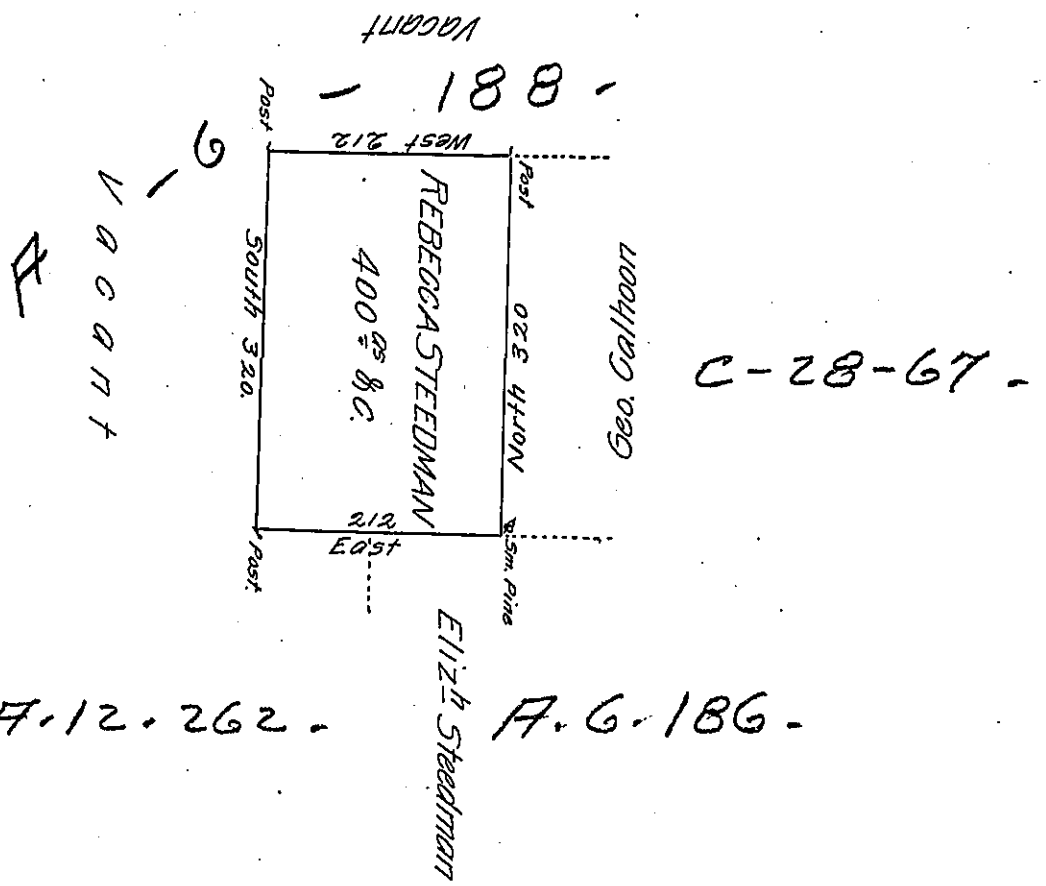


Foster -
Luzerne



A Draft of a tract of land Called — Situate Joining Land Surveyed for Geo. Calhoun & Others in the County of Northum^d. Containing four Hundred Acres & Allow^e Surveyed for Rebecca Steedman the 10th Day of Sep^r 1793 by Vir- tue of a Warrant dated the 13th Day of June 1793.

by W^m Gray D.S.

To Daniel Brodhead Esq. }
Surv^r Genl }

IN TESTIMONY that the above is a copy of the original remaining on file in the Department of Internal Affairs of Pennsylvania, made conformably to an Act of Assembly approved the 16th day of February 1833, I have hereunto set my hand and caused the Seal of said Department to be affixed at Harrisburg, this twentyfirst day of December 1906.

Isaac R. Brown
Secretary of Internal Affairs.